

From Our Home

MARITIME HOME INC.



Special points of interest:

- Why Maritime Home.
- More important than ever, building energy efficient homes.
- Facts about Canada's forest industry.
- Spotlight: Maritime Home's primary supplier of mouldings and architraves.

The Maritime Home Difference

One of the first questions always asked is, "Why should I deal with company X. What is it that makes company Y so special".

The answer often pushed back is superior service. Sorry, that is not good enough. In today's marketplace, superior customer service is the baseline all successful companies operate at.

How about price? Well price is very important, but of greater significance is the value being offered. If you look hard enough and long enough you will always find a better price for any individual item. The value is when the entire package is priced right and includes exactly what you are looking for. Or better yet, incorporates new products and services to exceed your expectations.

At Maritime Home we consider our ability to add value to your purchasing decisions to be our strategic difference.

The pace of change within the building industry continues to accelerate. The need for more energy efficient buildings, healthier buildings and quieter buildings are all being addressed with new products and technologies. The R2000 concepts and now Super E are living examples of this evolution. Maritime Home has the first hand experience and knowledge to assist our clients in utilizing these advances.



Links of Crowbush Cove: Prince Edward Island has established itself as Canada's ultimate golf destination.

While many of these advances are not directly visible to the consumer, they are quickly recognized by both consumers and industry experts as highly desirable features. Features that set our clients apart from the competition.

This is the Maritime Home difference, and it can be your difference/advantage as well.

Inside this issue:

The Maritime Home Difference	1
Energy Efficient Building	1,2
Canada's Timber Facts	3
Spotlight: Prince Edward Mouldings	3

Energy Efficient Building

Following the energy shortages of the 1970s, Natural Resources Canada (NRCAN), a Canadian government department, developed the Super E™ House Program. Canada is subject to an extreme range of weather conditions, from hot and humid summers, to bitterly

cold winters. The end result of this research is the Super E™ house, and in the process, other benefits have emerged, such as improving indoor comfort and creating a healthier living environment.

The resulting technology advancements, construction

techniques, performance testing and quality assurance are an integral part of every Super E™ house.

We will review the principals behind this technology, so you can understand how the systems work to form a Super E™ house.

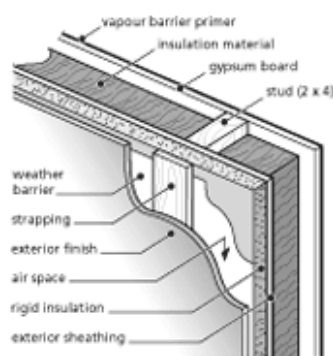
Energy Efficient Building

During the design process, every Super E™ certified home undergoes a computer simulation (HOT2000) evaluation, to optimize the energy design before it is built. After the house is constructed, and additional series of tests are performed to ensure the standards have been met.

The major elements of an energy efficient house are:

Increased Insulation:

Insulation slows the heat flow from warm to cooler areas. The technical requirements for the amount of insulation and the method of its installation vary with house location to ensure optimum cost-effectiveness, performance and moisture control.



Airtight Construction:

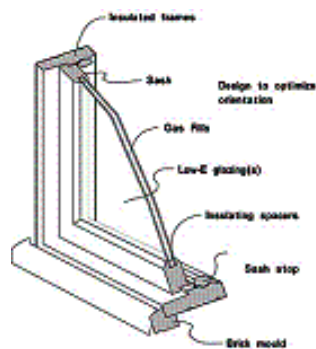
In any climate windy, rainy, hot or cold, air tightness is important for controlling wind pressure and rain penetration. An airtight home is energy efficient, durable and moisture-controlled, creating an indoor environment that is easily controlled with fresh air and controlled humidity for health and comfort. Super E™ homes are all blower-door tested to measure air tightness and to ensure that all the technical requirements for the home are met. By incorporating the best building practices for the installation

of windows and doors, vapour and air barriers create an airtight envelope.

Tests of the air barrier and ventilation system occur once the house is constructed. The standard calls for 1.5 air changes per hour at 50 pa. A typical non energy efficient house may have an air leakage rate of 10 or more air changes per hour.

High Performance Windows:

Windows are key features of every energy efficient home, providing light, comfort and passive ventilation. High performance windows improve upon virtually every aspect of traditional windows - from the use of multiple glazing, innovative coating and insulating spacers and are available in timber, timber clad or PVC. The windows have at least two layers of glass, aiding with resistance to heat loss and outside noise. All windows must pass stringent tests for air tightness, water tightness, wind load resistance and ease of operation.

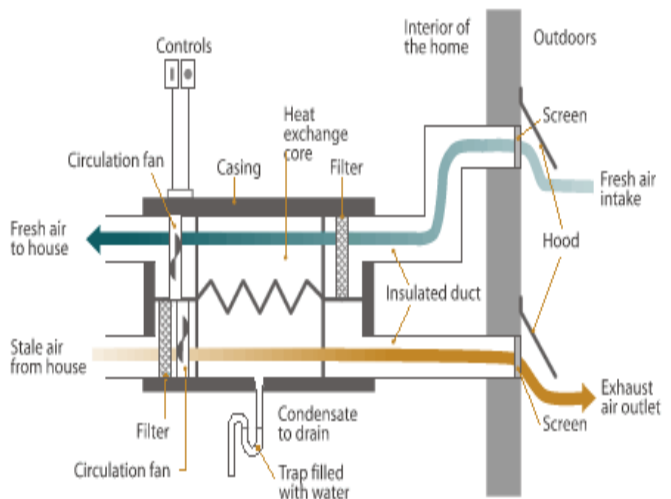


Heat Recovery Ventilation (HRV) System:

Canada is a world leader in designing, manufacturing and installing energy efficient ventilation systems for comfort and health by bring-

ing in healthy, filtered fresh air to each room and exhausting stale air to the outside. The HRV system is a simple energy efficient mode of ventilation, allowing the necessary air exchange within a home without relying on pressure differences. Houses need to have an indoor/outdoor exchange of air to replenish oxygen used by the occupants and to remove harmful indoor pollutants while controlling humidity.

“A continuous air barrier separates the living space within the home from the exterior”



(Note: All the parts shown here may not be found on all HRVs.)

Environmentally friendly Products:

These homes are built upholding efficient lumber use practices, starting with the use of timber as a renewable resource. Canada has extremely strong forest management practices, practices that are considered among the best in the world. Additionally the use of formaldehyde free and low chemical emission products ensure the home remains environmentally friendly, and healthy for all occupants.

“This technology has been proven in Canada, with temperature extremes from -40 to +40 Celsius, maritime conditions and extreme humidity”



MARITIME HOME INC.

57 Waterview Drive
Cornwall
Prince Edward Island
Canada COA 1H0

Phone: 902.367.4224
Fax: 902.367.4226
E-mail: info@MaritimeHome.ca

Products for Homes of Distinction

Were on the web!

www.MaritimeHome.ca

Canadian Timber Facts:

- *Canada has 417 million hectares of forest*
- *Canada's forest has been getting larger, by close to 9,000 hectares in the first half of the 90's*
- *The Canadian forest industry harvests less than 1/400th of the nations forests annually*
- *The forest industry is Canada's single largest net exporter.*
- *The forest industry contributes more than \$30 billion to Canada's balance of trade annually*
- *In 1998, forest products contributed \$31.6 billion to Canada's balance of trade.*

Spotlight: Prince Edward Mouldings

Maritime Home deals with a number of maritime companies to fulfill our purchasing requirements. These companies are selected on their ability to provide quality products, ready for the export marketplace. One of these companies is Prince Edward Mouldings.

Prince Edward Mouldings (PEM) is Prince Edward Island's premium supplier of wood mouldings. Serving local customers as well as clients around the globe, they provide a personal touch and pay close attention to detail. With a complete line of standard mouldings, as well as the ability to replicate custom or vintage designs, their commitment to customer satisfaction is matched only by the impor-

tance they place on the quality of their work. What separates them from the competition is:

Packaging:

To ensure that no moisture is picked up during shipment, several pieces are bundled together and placed into a poly sleeve sealed at both ends. The bundles are then carefully labeled as to their contents.

Cut-To-Length Option:

For no extra charge, they will pre-cut your mouldings, saving you time and cutting down on waste. This has been an extremely popular service with many local builders, especially when more "precious" hard-

woods are used.

Custom Profiles:

With their own grinding facility, they have the capability of cutting knives to produce any profile you desire whether that be to match an existing profile or create your own custom design.



Feel free to Email us at:
news@MaritimeHome.ca with
your feedback and inquiries